

Introducing the NEW Zebron Gas Management

Zebron™
Gas Management

- Replace
- Reorder
- Relax



Plug-In GC and LC Gas Filters

- Easy to use
- Dual filter housing prevents diffusion and increases safety
- Incredible high capacity
- Ensures high gas purity (99.9999 % pure)



Click-on Inline GC Gas Traps

- Serves multiple GC instruments at once
- Click-on connection
- Electronic indicator for easy replacement
- Ensures high gas purity (99.9999 % pure)

phenomenex®
...breaking with tradition™



Zebron™ Gas Management Filters

No Diffusion and No Leaks with Dual Wall Housing!

More protection and less contamination with an inner glass wall and better safety with a plastic outer wall.

Higher Capacity

The higher capacity of Zebron gas management filters means less need for replacement and an increase in system uptime, saving you time and money.

Easy Filter Installation in Under 20 Seconds!

Avoid system downtime by attaching a new filter to your gas line in seconds!

Never Disrupt Your Instrument!

The integrated one way valve on the Zebron gas management base units allow for quick and easy filter changes without disrupting the Instrument.

Easily Know When to Replace Your Filter!

1

Color Change

The indicator on each Zebron gas management filter will display when it is time to change your filter.*

2

Electronic Indicator

The optional electronic indicator will alert you with an audible warning on when to change your filter based on typical usage.



Got LC-MS?

Zebron LC-MS gas filters are now available!
(See page 9 for ordering information.)

Universal Compatibility

No need to change your existing connecting unit. Simply remove the old filter, replace the O-ring, click a new filter in, and tighten the connection with the ring nut! (Part No.: [AG6-1060](#)).

Zebtron™ Gas Management Traps

Click-on Trap

Never Disrupt Your Instrument!
Attach a new filter in under 10 seconds. Once the connecting unit is installed, you will be able to change traps as often as needed without interrupting the instrument.

Know When to Replace

The optional electronic indicator displays when scheduled replacement or maintenance is due.

High Pressure Durability

The Click-on trap is completely made out of stainless steel and can withstand high pressures. The seals at each end of the trap will only be punctured when the Click-on connector is locked in place.

Secure Wall Mount

These wall mounting clamps will EASILY help attach a Zebtron gas trap to a wall or surface.



Click-On Connection

The Click-on trap connectors allow inline cartridges to be exchanged without introducing contaminants. Spring loaded check valves seal when a filter is removed and open only when a new filter has been locked in place.



Explore your Zebron™ Gas Filters, Traps, and Electronic Indicators!

Upgrade to Automatic Diffusion/Contamination Prevention p. 5

5 High Capacity Zebron Gas Filters..... p. 6

5 Easy Click-on Zebron Gas Traps p. 7

No Memory Needed: New Electronic Indicator p. 8

Stress-Free Gas Filter Selection..... p. 9

Ridiculously Easy to Install GC Liners..... p. 10

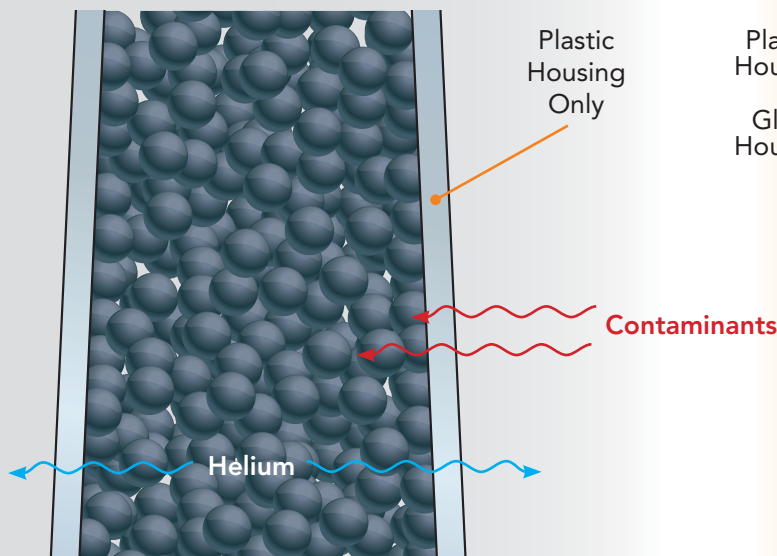
Ordering Information..... p. 11



Now is the Perfect Time to UPGRADE Your Gas Filter System!

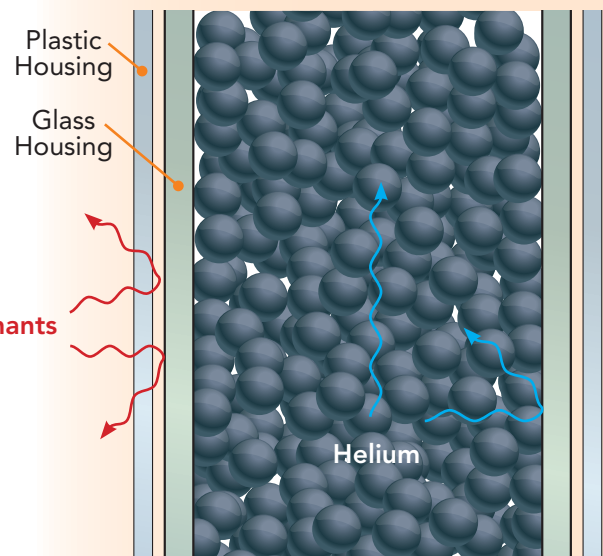
Traditional Plastic Filters

Porous plastic housing can allow contaminants not trapped by the filter to enter your system while also allowing helium carrier gas to escape.



Zebtron™ Gas Management Filters

- Improved design with a dual wall housing (Glass and Plastic)
- Glass prevents diffusion, ensuring a leak and contaminant free system.



From Inadequate Protection...

Plastic housings offer less protection when overheated or damaged on the outside; limiting capacity



To Ultimate Protection!

Dual housing design (plastic outside and glass inside) delivers greater filter safety and protection.

From Waiting for Stabilization...

Plastic filters are not suitable for pre-helium flushing as the helium will escape through the plastic housing. This causes the stabilization time for plastic filters used with helium gases to be significantly longer.



To Instant Usage!

Eliminate stabilization time by choosing pre-flushed helium specific filters. No more need for expensive gas to be wasted on stabilization.

From Medium Capacity...

Common gas filters with plastic housings have medium capacity and typically lead to shorter filter lifetimes.



To High Capacity!

High capacity filters offer extended system usage and less frequent need to replace filters, ultimately saving you both time and money.

5 High Capacity Zebron™ Gas Filters

Higher Capacity Filters Extend Your GC Column's Lifetime

The high adsorption capacity of the Zebron Gas Management filters removes contaminants from mobile phase gases which reduces potential column bleed, increases the lifetime of your column, and protects sensitive GC detectors from damage. With the new dual wall Zebron Gas Management filters, you will get more protection, better safety, and less contamination, GUARANTEED!

NEW

Moisture and Hydrocarbon Filter for LC-MS

Part No.: [AG6-1050](#) (2/pk)

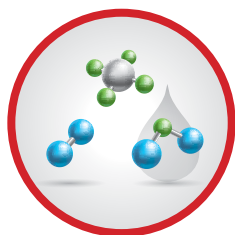
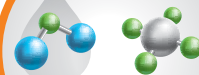
Removes water, organic compounds, and other foreign material from LC-MS nebulizer gas. To be used in combination with a high flow 2-position connecting unit (Part No.: [AG6-2204](#)) and Particle Filter (Part No.: [AG6-2205](#)).

Capacity:

H₂O 3.5g

~6g organic compounds depending on impurities

Most suitable for nebulizer gas for LC-MS and collision gas for MS/MS



Universal Filter

Part No.: [AG6-1040](#)

By combining the power of an oxygen, moisture, and hydrocarbon filter, the universal filter will provide worry free protection from a variety of contaminants.

Capacity:

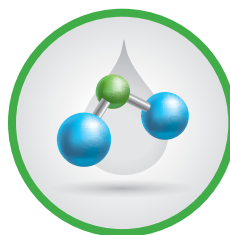
O₂ 100mL

H₂O 1g

Organics (depending on impurities)

Most suitable for carrier gas

Also available in Helium specific format for GC-MS (Part No.: [AG6-1070](#))



Moisture Filter

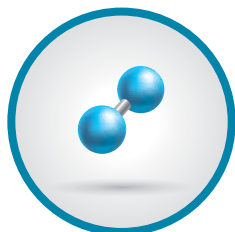
Part No.: [AG6-1020](#)

Removes moisture from gas streams. Moisture in carrier gas lines will prematurely degrade oxygen and hydrocarbon traps and increase detector noise.

Capacity:

H₂O 7.2 g

Most suitable for carrier gas and detector gases



Oxygen Filter

Part No.: [AG6-1010](#)

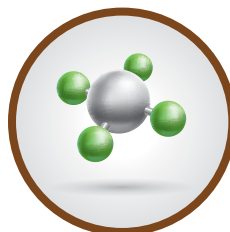
Removes oxygen, as well as chlorine and sulfur, while preventing oxidation of:

- your GC column's stationary phase
- consumables such as septum, glass wool, and liners
- ECD and MS detectors

Capacity:

O₂ 150 mL

Most suitable for carrier gas



Hydrocarbon Filter

Part No.: [AG6-1030](#)

Use hydrocarbon filters when there is a potential source of hydrocarbon contaminants or if you suspect you are observing carrier gas ghost peaks.

Capacity:

HC 7 g (as *n*-butane)

Most suitable for carrier gas

Discover Zebtron™ Click-on Inline Gas Traps

High Capacity and Easy to Install Click-on Traps

Zebtron Gas Management trap cartridge systems make changing gas traps quick and easy. Spring-loaded check valves close when the filter is removed and open only when a new filter has been locked in place. With the Zebtron gas traps there is no need for loosening and tightening fittings every time a trap is changed and you can eliminate contamination during the process.

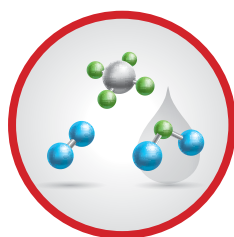
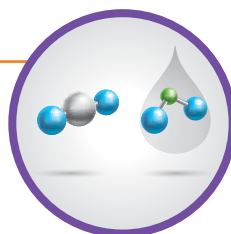
NEW

Carbon Dioxide Click-on Inline Trap

Part No.: [AG6-3150](#)

This combination trap removes both CO₂ and moisture from gas streams.

Capacity:
CO₂ 225 g

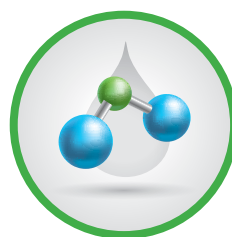


Universal Click-on Inline Trap

Part No.: [AG6-3140](#)

The universal triple trap is ideal for purifying almost any gas. It contains oxygen, moisture, and hydrocarbon scrubbers in one easy-to-change economical inline trap.

Capacity:
O₂ 2 L
H₂O 70g
120g organic compounds (depending on impurities)

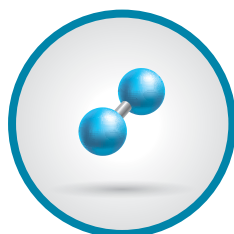


Moisture Click-on Inline Trap

Part No.: [AG6-3120](#)

Moisture in carrier gas lines will prematurely degrade oxygen and hydrocarbon traps while increasing detector noise. As a precaution, we highly recommend installing a moisture trap before the hydrocarbon and oxygen traps on all carrier gas lines.

Capacity:
H₂O 105 g

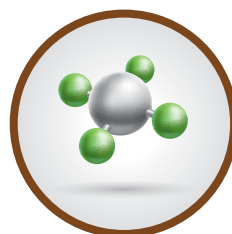


Oxygen Click-on Inline Trap

Part No.: [AG6-3110](#)

Oxygen is a column killer that's present even in UHP gases as minute leaks at fittings allow an influx of oxygen against the concentration gradient. Because oxygen can enter a gas line at any fitting or during gas bottle exchange, the oxygen trap should be the last connection before the gas line enters the GC system.

Capacity:
O₂ 2.5 L



Hydrocarbon Click-on Inline Trap

Part No.: [AG6-3130](#)

Use a hydrocarbon trap if your gas has a potential source of hydrocarbon contaminants or if you suspect you are observing carrier gas ghost peaks. Install the hydrocarbon trap after the moisture trap, to prevent moisture from degrading the hydrocarbon trap's capacity.

Capacity:
180g organic compounds (depending on impurities)

Save Time and Money!

Zebron™ Electronic Indicators remind you when to replace your GC Filter or Trap!

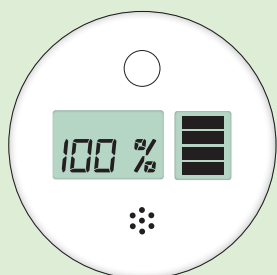
- Easy-to-read indicator warns when a filter is becoming saturated—allowing you enough time to order a replacement
- Combined audio and visual warning system
- Simple configuration to match your own replacement/maintenance schedule
- Attaches directly onto gas filters and traps



Zebron Electronic Indicator

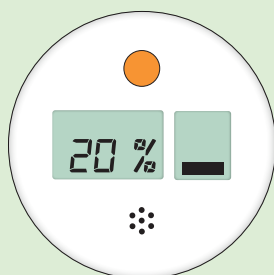


Clip Onto Your Filter or Trap and Go!



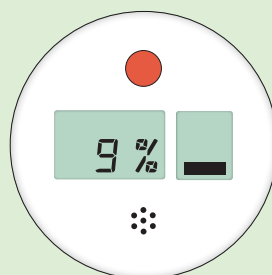
No Color

Ready to use



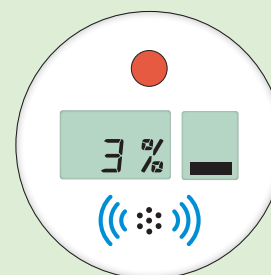
Orange

The LED will flash orange when the remaining time of the total lifetime of the device is between 20 and 10 percent



Red

The LED will flash red when the remaining time of the total lifetime of the device is between 9 and 0 percent

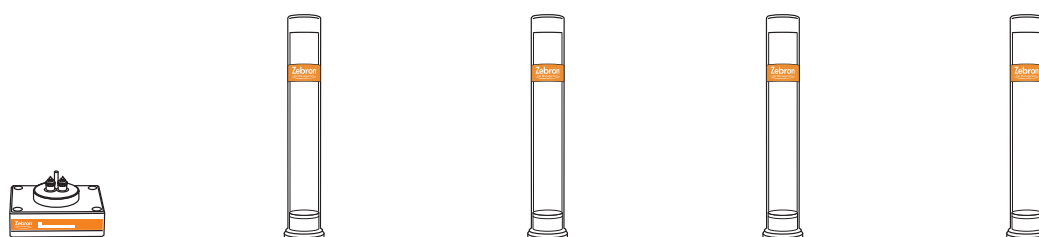
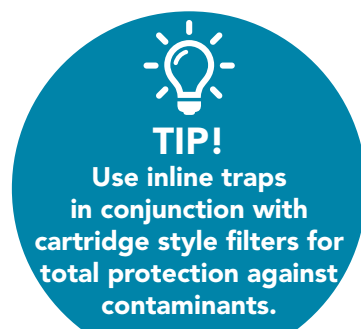


Red + BUZZ

The buzzer will sound when the remaining time of the total lifetime of the device is between 3 and 0 percent

Find Your Zebron Gas Management Filter in Seconds!

Use the chart below to select the best filters for your GC and LC analysis



Detector	Fitting	Connecting Unit Brass**		Filter #1		Filter #2		Filter #3		Filter #4	
		Description	Part No.	Description	Part No.	Description	Part No.	Description	Part No.	Description	Part No.
GC-MSD	¼ in.	1 Position	AG6-2101	Universal	AG6-1070	—	—	—	—	—	—
GC-MSD	⅜ in.	1 Position	AG6-2201	Universal	AG6-1070	—	—	—	—	—	—
GC-TCD	¼ in.	2 Position	AG6-2102	Moisture	AG6-1020	Oxygen	AG6-1010	—	—	—	—
GC-TCD	⅜ in.	2 Position	AG6-2202	Moisture	AG6-1020	Oxygen	AG6-1010	—	—	—	—
GC-ECD	¼ in.	2 Position	AG6-2102	Moisture	AG6-1020	Oxygen	AG6-1010	—	—	—	—
GC-ECD	⅜ in.	2 Position	AG6-2202	Moisture	AG6-1020	Oxygen	AG6-1010	—	—	—	—
GC-FID	¼ in.	4 Position	AG6-2103	Moisture	AG6-1020	Oxygen	AG6-1010	Hydrocarbon	AG6-1030	Hydrocarbon	AG6-1030
GC-FID	⅜ in.	4 Position	AG6-2203	Moisture	AG6-1020	Oxygen	AG6-1010	Hydrocarbon	AG6-1030	Hydrocarbon	AG6-1030
GC-NPD	¼ in.	4 Position	AG6-2103	Moisture	AG6-1020	Oxygen	AG6-1010	Hydrocarbon	AG6-1030	Hydrocarbon	AG6-1030
GC-NPD	⅜ in.	4 Position	AG6-2203	Moisture	AG6-1020	Oxygen	AG6-1010	Hydrocarbon	AG6-1030	Hydrocarbon	AG6-1030
GC-FPD	¼ in.	4 Position	AG6-2103	Moisture	AG6-1020	Oxygen	AG6-1010	Hydrocarbon	AG6-1030	Hydrocarbon	AG6-1030
GC-FPD	⅜ in.	4 Position	AG6-2203	Moisture	AG6-1020	Oxygen	AG6-1010	Hydrocarbon	AG6-1030	Hydrocarbon	AG6-1030
LC-MSD	¼ in.	2 Position	AG6-2204	Hydrocarbon *		Moisture *		—	—	—	—

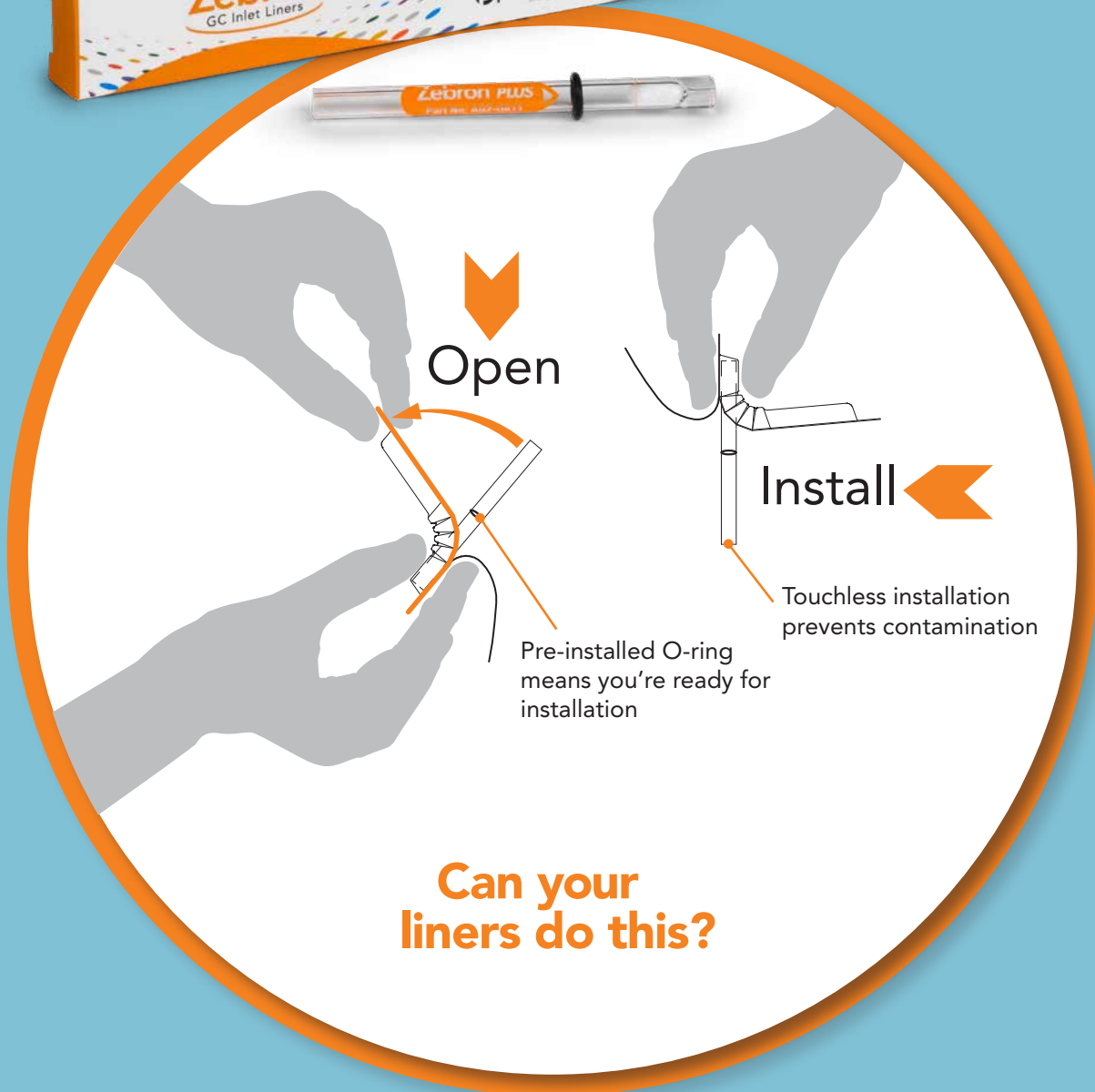
*High Flow Hydrocarbon/Moisture Filter Bundle for LC-MS, Part No. [AG6-1050](#) 2/pk

**All Connecting units are also available in Stainless Steel format; check ordering information on page 11 for part numbers.

Visit: www.phenomenex.com/GasManagement
to learn more about Zebron Gas Management filters and traps



Remarkably Inert, Ridiculously Easy to Install, GC Inlet Liners



Find Your GC Liner!

Search by:

- Application
- System Manufacturer
- Injection Type
- Part Number

www.phenomenex.com/FindLiner



Zebtron Gas Management Filters

Part No.	Description	Unit
AG6-1040	Gas Filter Universal	ea
AG6-1070	Gas Filter Universal (Helium)	ea
AG6-1010	Gas Filter Oxygen	ea
AG6-1020	Gas Filter Moisture	ea
AG6-1030	Gas Filter Hydrocarbon	ea
AG6-1050	Gas Filter Hydrocarbon/Moisture for LC-MS	2/pk
AG6-1060	Ring Nut for Gas Filter	ea



Zebtron Gas Management Traps

Part No.	Description	Unit
AG6-3140	Click-on Universal Trap	ea
AG6-3110	Click-on Oxygen Trap	ea
AG6-3120	Click-on Moisture Trap	ea
AG6-3130	Click-on Hydrocarbon Trap	ea
AG6-3150	Click-on Carbon Dioxide Trap	ea



Zebtron Connecting Units

Part No.	Description	Unit
AG6-2101	1-position Connecting Unit 1/4 in. Brass	ea
AG6-2102	2-position Connecting Unit 1/4 in. Brass	ea
AG6-2103	4-position Connecting Unit 1/4 in. Brass	ea
AG6-2201	1-position Connecting Unit 1/8 in. Brass	ea
AG6-2202	2-position Connecting Unit 1/8 in. Brass	ea
AG6-2203	4-position Connecting Unit 1/8 in. Brass	ea
AG6-2204	High flow 2-position Connecting Unit for LC-MS	ea
AG6-2205	Particle Filter for LC-MS	ea
AG6-2206	O-ring Replacement for Gas Filter Baseplate	20/pk

Part No.	Description	Unit
AG6-2301	1-position Connecting Unit 1/4 in. Stainless Steel	ea
AG6-2302	2-position Connecting Unit 1/4 in. Stainless Steel	ea
AG6-2303	4-position Connecting Unit 1/4 in. Stainless Steel	ea
AG6-2304	1-position Connecting Unit 1/8 in. Stainless Steel	ea
AG6-2305	2-position Connecting Unit 1/8 in. Stainless Steel	ea
AG6-2306	4-position Connecting Unit 1/8 in. Stainless Steel	ea

Zebtron Base Electronic Indicator and Other Accessories

Part No.	Description	Unit
AG6-3160	1/8 in. Brass Click-on Connector Set	2/pk
AG6-3170	1/4 in. Brass Click-on Connector Set	2/pk
AG6-3180	Wall-mounting Clamp Set for Gas Traps	2/pk
AG6-4150	1/8 in. Stainless Steel Click-on Connector Set	2/pk
AG6-4160	1/4 in. Stainless Steel Click-on Connector Set	2/pk
AG6-3190	O-ring Replacement Set for Gas Trap	20/pk
AG6-4110	Electronic Indicator for Gas Trap	ea
AG6-4120	Electronic Indicator for Gas Filter	ea
AG6-4130	Electronic Indicator for LC-MS Filter	ea



First time ordering Zebtron Click-on Gas Traps?

Be sure to order the **brass or stainless steel connector** with your first trap.



BE-HAPPY™
guarantee

Your happiness is our mission. Take 45 days to try our products. If you are not happy, we'll make it right.
www.phenomenex.com/behappy

Got Gas?

Make sure it's PURE with Zebbron Gas Management

Australia
t: +61 (0)2-9428-6444
auinfo@phenomenex.com

Austria
t: +43 (0)1-319-1301
anfrage@phenomenex.com

Belgium
t: +32 (0)2 503 4015 (French)
t: +32 (0)2 511 8666 (Dutch)
beinfo@phenomenex.com

Canada
t: +1 (800) 543-3681
info@phenomenex.com

China
t: +86 400-606-8099
cninfo@phenomenex.com

Denmark
t: +45 4824 8048
nordicinfo@phenomenex.com

Finland
t: +358 (0)9 4789 0063
nordicinfo@phenomenex.com

France
t: +33 (0)1 30 09 21 10
franceinfo@phenomenex.com

Germany
t: +49 (0)6021-58830-0
anfrage@phenomenex.com

India
t: +91 (0)40-3012 2400
indiainfo@phenomenex.com

Ireland
t: +353 (0)1 247 5405
eireinfo@phenomenex.com

Italy
t: +39 051 6327511
italiainfo@phenomenex.com

Luxembourg
t: +31 (0)30-2418700
nlinfo@phenomenex.com

Mexico
t: 01-800-844-5226
tecnicomx@phenomenex.com

The Netherlands
t: +31 (0)30-2418700
nlinfo@phenomenex.com

New Zealand
t: +64 (0)9-4780951
nzinfo@phenomenex.com

Norway
t: +47 810 02 005
nordicinfo@phenomenex.com

Portugal
t: +351 221 450 488
ptinfo@phenomenex.com

Singapore
t: +65 800-852-3944
sginfo@phenomenex.com

Spain
t: +34 91-413-8613
espinfo@phenomenex.com

Sweden
t: +46 (0)8 611 6950
nordicinfo@phenomenex.com

Switzerland
t: +41 (0)61 692 20 20
swissinfo@phenomenex.com

Taiwan
t: +886 (0) 0801-49-1246
twinfo@phenomenex.com

United Kingdom
t: +44 (0)1625-501367
ukinfo@phenomenex.com

USA
t: +1 (310) 212-0555
info@phenomenex.com

All other countries
Corporate Office USA 
t: +1 (310) 212-0555
info@phenomenex.com



www.phenomenex.com

Phenomenex products are available worldwide. For the distributor in your country, contact Phenomenex USA, International Department at international@phenomenex.com

Terms and Conditions

Subject to Phenomenex Standard Terms and Conditions, which may be viewed at www.phenomenex.com/TermsAndConditions.

Trademarks

Zebbron is a trademark of Phenomenex.

FOR RESEARCH USE ONLY. Not for use in clinical diagnostic procedures.

© 2019 Phenomenex, Inc. All rights reserved.